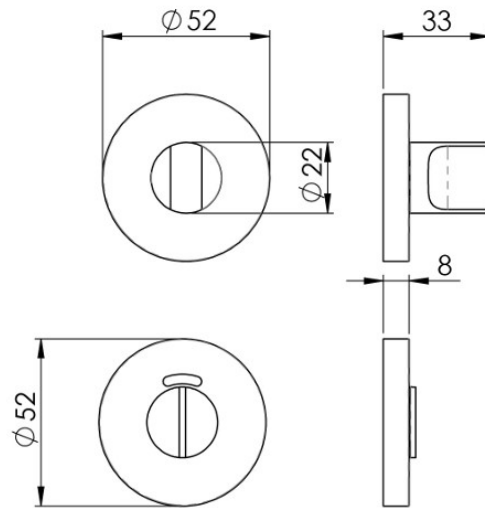


PRODUCT DATA SHEET



ITEM CODE	CST1015iSSS
MANUFACTURER	CARLISLE BRASS LTD UK
BRAND	EUROSPEC
AVAILABLE FINISH	SATIN STAINLESS STEEL
TYPE	TURN AND RELEASE
ROSSETTE DIMENSION	52MM x 52MM
ROSSETTE DEPTH	8MM
PROJECTION	38MM
MECHANICAL WARRANTY	10 YEARS



Parkhouse Road, Carlisle, Cumbria, CA3 0JU

